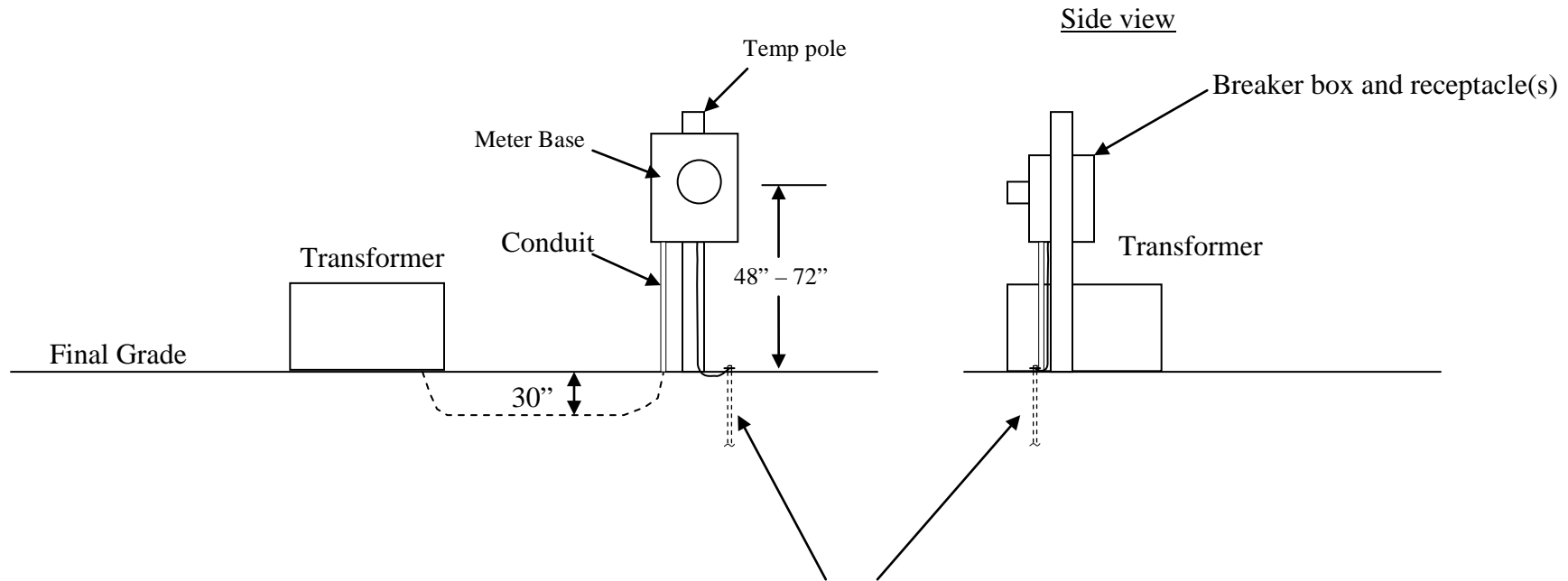


Consumer to provide all material including cable to be connected into transformer
 Cooperative will install and connect consumer's cable into Transformer.
 Consumer must provide adequate cable length to make connection
 Consumer has to provide the ditch
 The typical distance that the temp service is from the Transformer is 6' to 8'



8' ground rod, clamp and #6 bare copper ground wire
 (Supplied and installed by consumer)
 Grounding conductor shall be connected from the ground
 lug in meter base to the ground rod(s)
 Cooperative requires the meter base to be grounded

**TEMPORARY UNDERGROUND SERVICE
 ON POLE**
 (6 to 8 FEET FROM TRANSFORMER)



CENTRAL VIRGINIA
 ELECTRIC COOPERATIVE

12/04/2012